



TERMS TO STUDY

Name _____ Date _____

- fermata** _____
- sharp** _____
- double bar line** _____
- measure** _____
- bar line** _____
- flat** _____
- repeat sign** _____
- staff** _____
- Treble Clef** _____
- Bass Clef** _____
- quarter note** _____
- eighth note** _____
- half note** _____
- ritard** _____
- mezzo piano (med. soft)** _____
- Coda** _____
- natural** _____
- crescendo** _____

A. *mp* B. *mf* C.

D. E. F.

G. H. I. *rit.*

J. K. L.

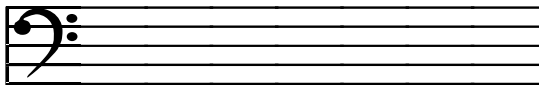
M. N. O. P.

Q. R. S.

T. U. V.

There will be 3 that you don't use. 😊

Draw 3 more Bass Clefs



Draw 3 more Treble Clefs



Fill in bar lines to make correct measures:

