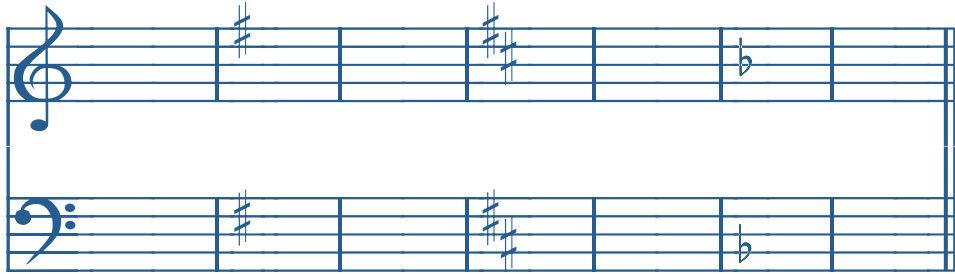


# Keys of C, F, G, & D

Name \_\_\_\_\_

## I. PRACTICE WRITING KEY SIGNATURES:



(C) G G D D F F

Draw yours here:



## II. PRACTICE WRITING MAJOR SCALES & TONIC CHORDS:

(Major Scale Pattern: WWhWWWh) Tonic (I) Chord

Make an "X" on the all notes of the scale.

Make an "X" on the notes of the Tonic (I) triad.



C Major



F Major



G Major



D Major