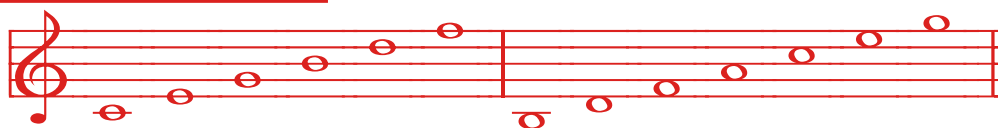


USING STAFFWRITER TO MAKE USEFUL PIANO THEORY PAGES

I. NOTES: Line Notes/Space Notes/Grand Staff Notes

Treble ("G") Clef



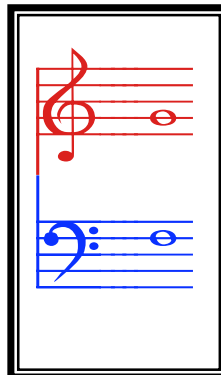
Mid.C E G B D F (B) (D) F A C E (G)

Bass ("F") Clef



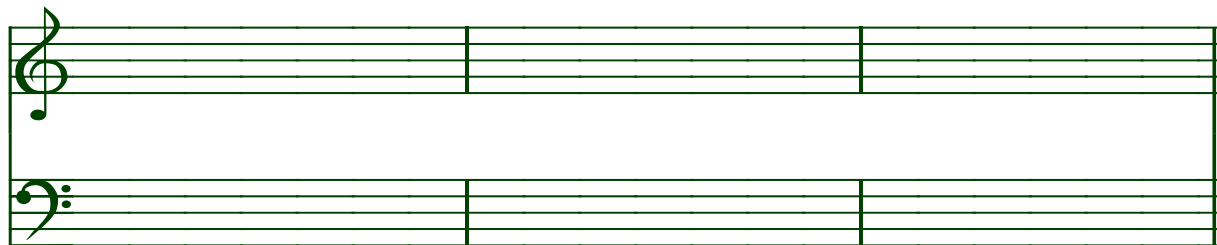
G B D F A Mid.C (F) A C E G (B) (D)

Grand Staff



II. NOTE PRACTICE

SPELL "caged", "edge", and "Abe" in both the treble clef and bass clef .



III. PRACTICE WRITING THESE KEY SIGNATURES:



G G D D F F
 ↑ ↑ ↑

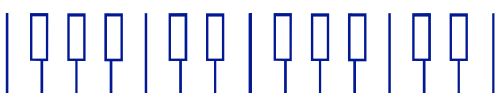
Draw yours in this space:

IV. PRACTICE WRITING MAJOR SCALES & I CHORDS:

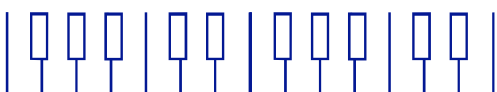
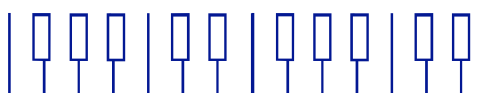
(Major Scale Pattern: WWhWWWh) Tonic (I) Chord

Make an "X" on the notes of the scale.

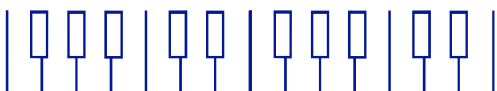
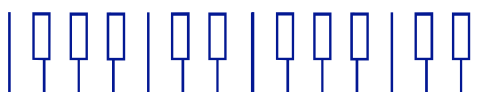
Make an "X" on the notes of the Tonic (I) chord.



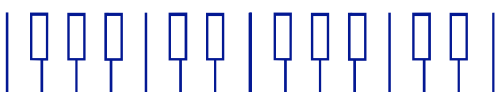
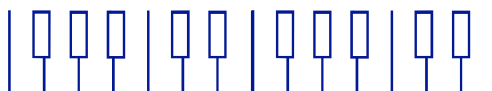
C Major



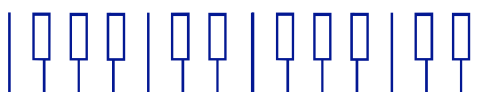
G Major



D Major

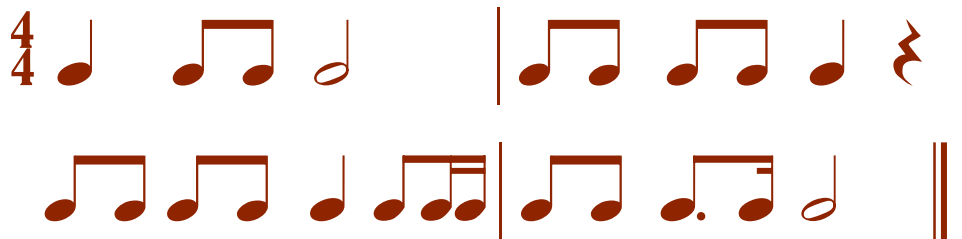


F Major























IV. RHYTHMS

Write a melody using these rhythms:



V. Write the definitions for these symbols.

(You may use your theory book or music dictionary.)

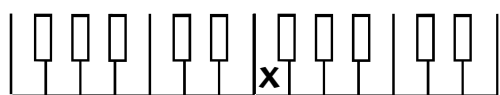
	_____		_____
	_____		_____
	_____		_____
	_____		_____
	_____		_____
	_____		_____
	_____		_____
	_____		_____
	_____		_____
	_____		_____

NOTE GUIDE

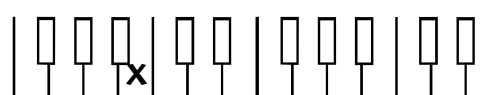


VI. Notes, Chords, and Intervals

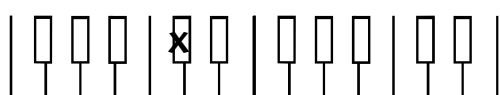
(Use *M* for Major; *m* for minor; *P* for Perfect. Ex: *M2nd*, *Cm*, etc.)



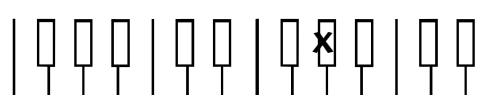
1. This note is _____.



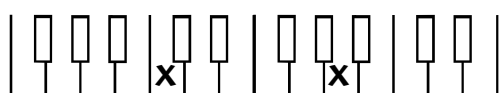
2. This note is _____.



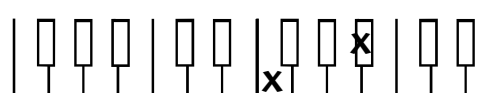
3. This note is ___ or ___.



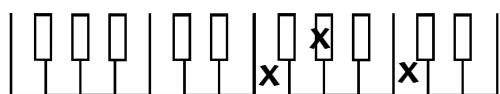
4. This note is ___ or ___.



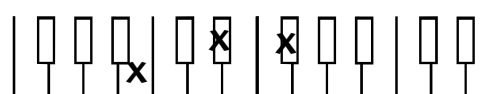
5. This is a _____.



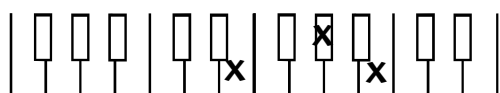
6. This is a _____.



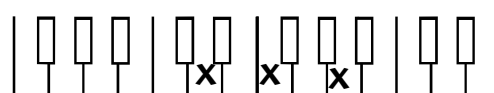
7. This is an _____ chord.



8. This is a _____ chord.



9. This is an _____ chord.



10. This is a _____ chord.