

TIPS FOR USING "text boxes" WITH STAFFWRITER

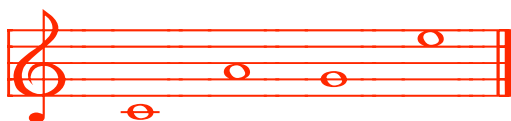
If you create your files using your word-processor's "text boxes", entire sections of your page can be shifted around easily making it very handy to edit files for different usage in the future. Here are the steps:

1. Just draw "text boxes" and write your text in the boxes.
2. Assign "no fill" and "no line" for the text boxes (on the Formatting Palette) to achieve "floating", movable text that you can "place" anywhere on the page.
3. Under "Wrapping" on the Formatting Palette, choose "in front of text" so text boxes won't "collide" with any text that's on the page.

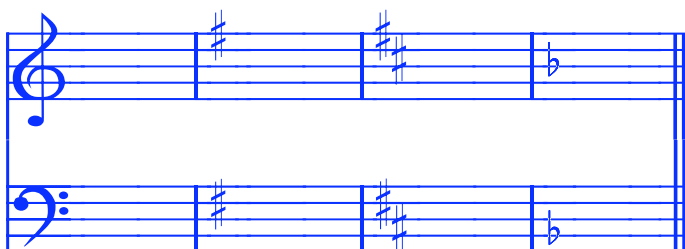
To see how it's done, look at these "Before" and "After" examples.

BEFORE: This Strange-Looking Page--

I. NAME THESE NOTES:



II. NAME THESE KEY SIGNATURES:



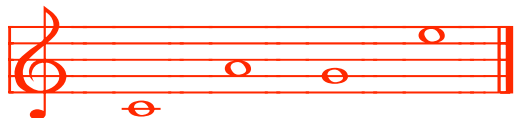
III. DRAW BARLINES WHERE NEEDED:



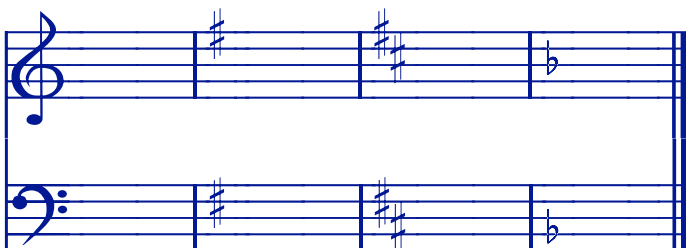
Looks like this, after you assign "no fill" and "no lines".

AFTER:

I. NAME THESE NOTES:



II. NAME THESE KEY SIGNATURES:



III. DRAW BARLINES WHERE NEEDED:



By using "text boxes" with *StaffWriter*[®], you increase the power that StaffWriter offers and also helps you make files more quickly.

By using text boxes to create your files, you can--

- copy large sections of material and paste into other documents,
- quickly change your entire design--just "click and drag" the boxes,
- add new sections of material to previously made files, as needed, --without starting from scratch! -MMF